

KIT PRODUCT TECHNICAL DATASHEET

KIT BM30/326/HS

Brushless 

Intensive use 

High Speed 

Digital Encoder 

Magnetic limit switch 



Composition KIT BM30/326/HS

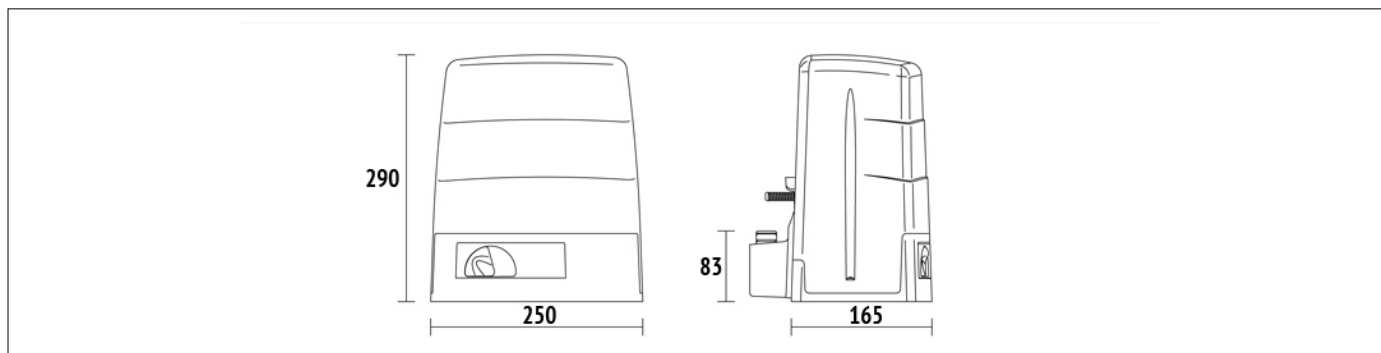
CODE	DESCRIPTION	QTY
BM30/304/HS	Electromechanical HIGH SPEED BRUSHLESS motor, low voltage, super intensive use, irreversible, ideal for sliding gates up to 400 kg with built-in digital controller B70 series, magnetic limit switch.	1
H93/RX20/I	Plug-in receiver fixed code 2 channels 433,92 Mhz (50 storable codes) for control unit series H70, B70, EDGE, CTRL and F70.	1
SYNUS/2	Dual code transmitter (modality fixed code or rolling code), 433,92 Mhz. 2 channels, with radio for copy.	2
R90/F4ES	Pair of external photocells synchronized 24V AC/DC (max. 4 pairs).	1
FIFTHY/24	LED flashing light series FIFTHY 24V with integrated antenna.	1
R99/C/001	Signboard "Automatic Opening".	1

PRODUCT TECHNICAL SPECIFICATIONS

Max gate weight	400 kg
Power line supply	230V AC - 50Hz
Motor power supply	24V
Power rating	125W
Frequency of use	Intensive use
Thrust	50 - 350N
Operating temperature	-20+55°C
Protection level	IP44
Reductor Type	Irreversible

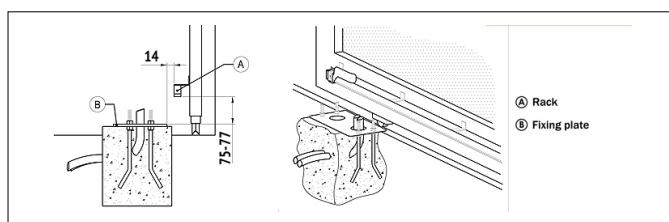
Manoeuvre speed	26 m/min (0.44 m/s)
Limit switch	Magnetic
Onboard control unit	B70/1DC
Encoder	Digital native encoder + magnetic digital SENSORED, 4096 PPR
Type exit gear	Z15/mod 4
Operating cycles per day (opening/closing - 24 hours no stop)	500
Maximum dimension product in mm (L x W x H)	250 x 165 x 290
Product weight packed (Kg)	11,6
Number items per pallet/box	44

PRODUCT DIMENSIONS AND PREPARING FOR INSTALLATION

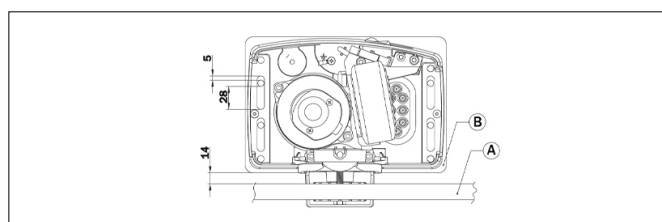


DIMENSIONS

PRODUCT PREPARING FOR INSTALLATION



PREDISPOSITION FOR STANDARD INSTALLATION



PREDISPOSITION FOR STANDARD INSTALLATION

PRODUCT ACCESSORIES



B71/PBX24/BOX
Hybrid inverter, "Network Assisted" version, for powering the automation. Also provides a battery-charger function thanks to the connection to the solar panels or mains supply for powering the 24V DC brushless digital controllers with a mains voltage of 230V AC.



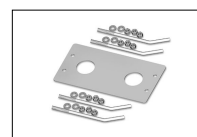
B71/PBX24/BOX/115
Hybrid inverter, "Network Assisted" version, for powering the automation. Also provides a battery-charger function thanks to the connection to the solar panels or mains supply for powering the 24V DC brushless digital controllers with a mains voltage of 115V AC.



B71/PBX/BOX
Hybrid inverter, "Full Solar" version, for powering the automation. Also provides a battery-charger function thanks to the connection to the solar panels for powering the brushless digital controllers.



KT220
Raised fixing plate for M30 series (+3 cm).



KT223
Fixing plate with stay bolts and screws M30 series.



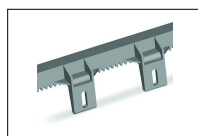
GA550
Galvanised steel rack 22x22x1000 module 4.



GA551
Galvanised steel rack 30x12x1000 module 4 with spacers and screws.



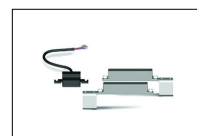
GA554
Pocket of 6 spacers (2,5 cm) and screws.



GA553
Nylon rack module 4 with 6 connectors L.1000.



GA557
Roger Technology nylon rack module 4 with 6 connectors L.1000.



MC775
Kit magnetic limit switch for control unit H70/103AC, H70/104AC, B70/1DC, B70/1DCHP.



B74/BCONNECT vers. HW2
Module Wi-Fi B-CONNECT - Remote management and programming system in IP web browser mode via Wi-Fi hot spot P2P connection for Brushless control units (B70/2ML - EDGE1 - CTRL - B70/1DC - B70/1DCHP - B70/1T - B70/1THP - F70/1PU36).